



*Sustainable Solutions,  
Reliable Services.*

*Company Profile & Portfolio*



More than **100 projects**  
delivered successfully  
over **25 Years**

Exemplifying our commitment to  
**Anchoring Trust & Excellence.**



*Sustainable **Solutions**, Reliable **Services**.*

# About Us

---

In business since 1995, Progressive Systems & Engineering has been a leading specialist in Valves, Automation & Control solutions.

From initial conceptualization to implementation, we have a strong team to support every customer's needs every step of the way.

**Sustainable Solutions. Reliable Services** – Our commitment to every customer, no matter how big or small.

---

## **Key Industries Served**

- 1 Offshore / Marine
- 2 Chemical
- 3 Oil & Gas
- 4 High Tech

## **Solution Components**

- 1 Valves
- 2 Actuation
- 3 Control & Feedback Accessories
  - Limit Switch
  - On / Off Controllers
  - Positioners
  - Filter / Pressure Regulators
- 4 Primary Flow Elements And Measurements

# Final Control & Instrumentation



## Product Categories

1. Valves
2. Actuation
3. Control & Feedback Accessories
4. Primary Flow Elements & Instruments

# Valves

A key element on any pipeline & system, choosing the suitable valve for your process requirement is of utmost importance.

At **PSE**, we understand your application & in turn, work together with you to select the appropriate valve & material for your system.

Key Functions :

**Isolation / Control**

**Diverting**

**Non-Return**

## Valve Types

1. Butterfly
2. Ball
3. Check
4. Globe
5. Gate



# Actuation

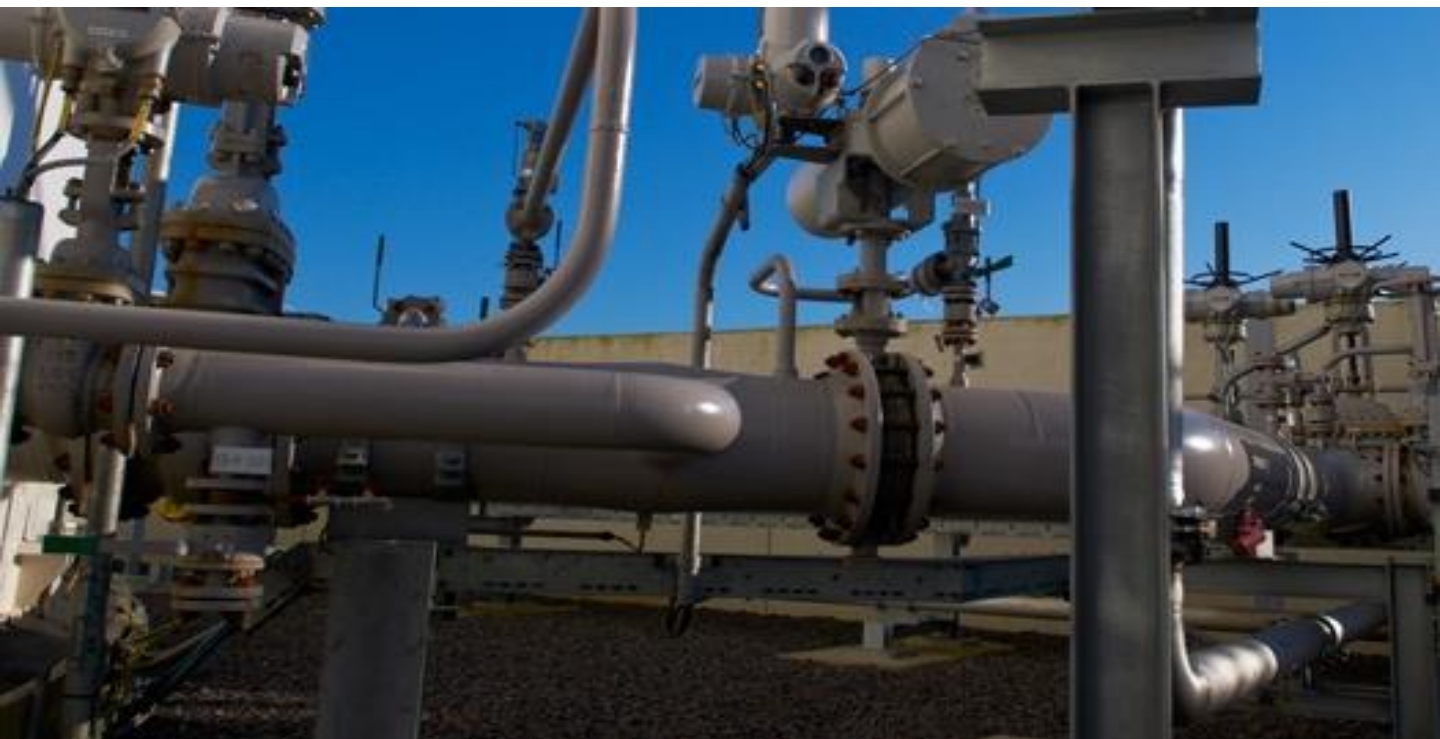
Selecting the right actuator to operate your valves effectively is crucial.

Not only does it concern the operating effectiveness of your valves, it affects the service life of your valve in the long term as well.

At **PSE**, we work with you to identify the appropriate actuator for your control requirement and size the right actuator accordingly.

## Actuation Types

1. Pneumatic / Electro-Pneumatic
2. Hydraulic / Electro-Hydraulic
3. Electric
4. Manual



# Control & Feedback Elements

Visibility & control are a key considerations factors that affect the design of numerous system applications today.

At **PSE**, we work with you to identify the appropriate control accessories aligned to your overall system.

Key Functions :  
**On / Off Control**  
**Modulating / Regulating**  
**Feedback**

## Control & Feedback Elements

1. Mechanical Limit Switches
2. Proximity Switches
3. Solenoid Valves
4. On-Off Controllers
5. Positioners



# Primary Flow Elements & Instruments

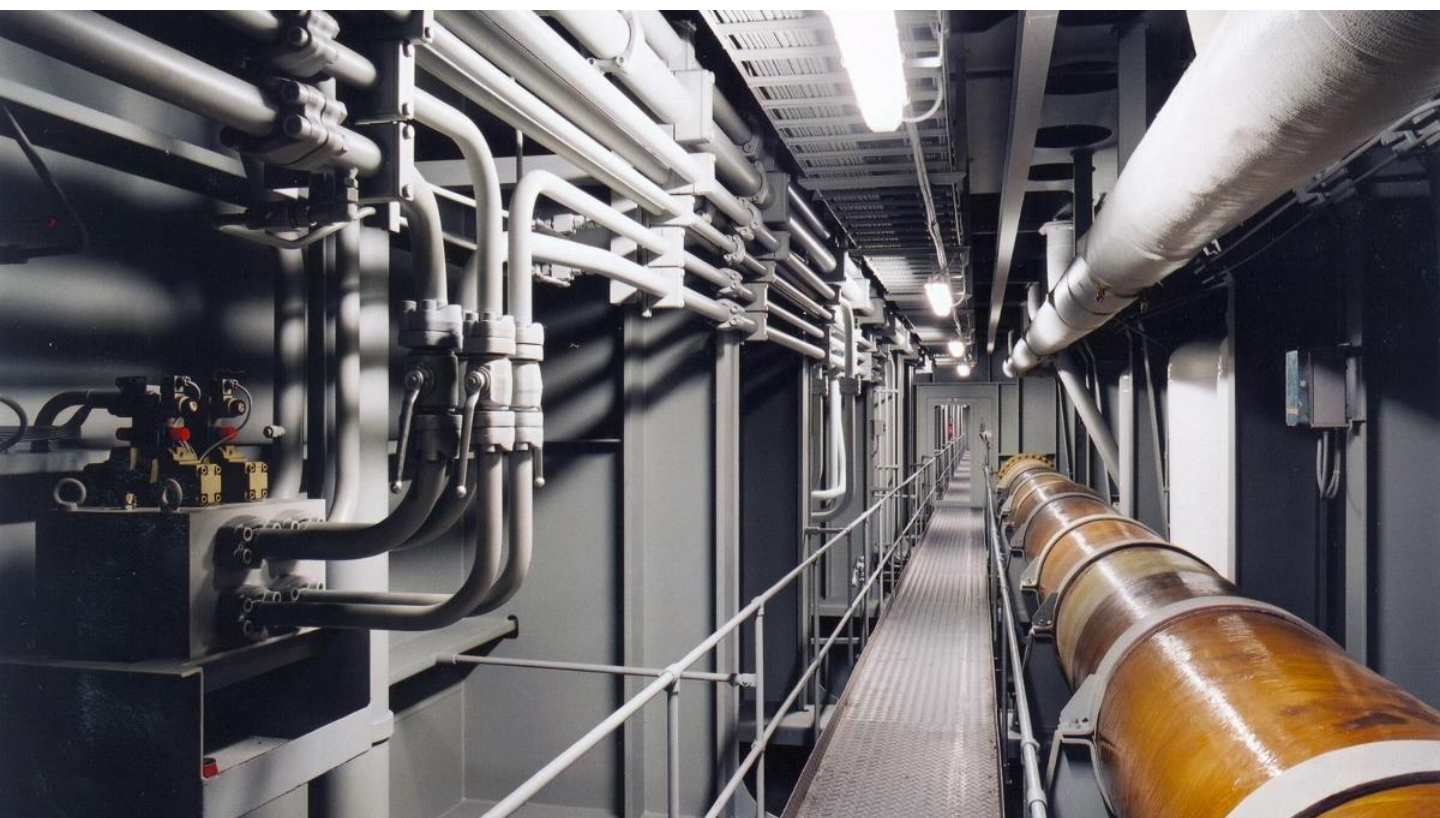
Customisation, coupled with just-in-time production are key advantages we offer clients, without compromise on quality.

At **PSE**, we work with you to identify the appropriate primary flow elements & instruments for your overall system.

Manufacturing is done in Singapore with ability to expedite promptly.

## Products

1. Orifice Plates
2. Venturi Tubes
3. Restriction Orifice
4. Flow Nozzles
5. Thermocouples
6. RTDs





# Brands Portfolio

We believe in providing engineering excellence in every solution to our clients.

Our solutions portfolio only comprises of reputable names in their respective fields. We understand the integration dynamics between brands



**PSE** is also an established distributor for Bray Controls since 1998.



*Sustainable **Solutions**, Reliable **Services**.*

# Clientele



Sustainable **Solutions**, Reliable **Services**.

# Client Portfolio

Over the last 20 years of engagement & serving our clients, we have established a strong reputation in our field.

Some of our clients we have the privilege to serve :



*Sustainable **Solutions**, Reliable **Services**.*

## Contact Us

---

1 Kaki Bukit Road 1,  
Enterprise One, #02-49  
Singapore 415934

Tel : (65) 6745 2619

Fax : (65) 6746 6453

Email : [sales@psepl.com.sg](mailto:sales@psepl.com.sg)

Website : [www.psesg.com](http://www.psesg.com)

*Sustainable **Solutions**, Reliable **Services**.*